



Variable displacement vane pump Pump combination V3 ... + V3 ...

up to 10 MPa

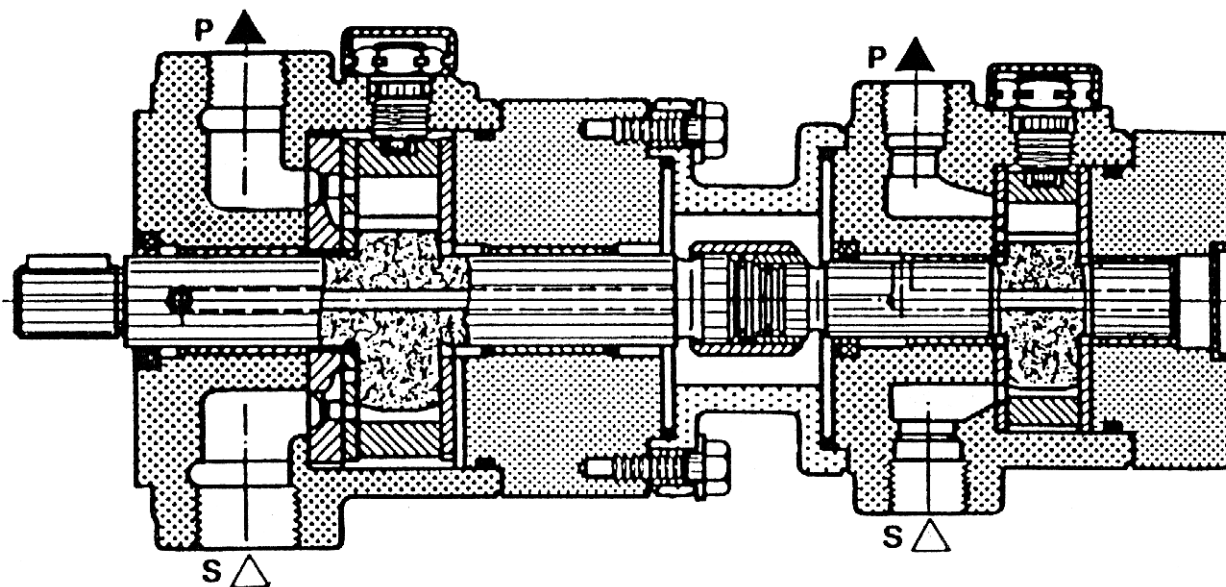
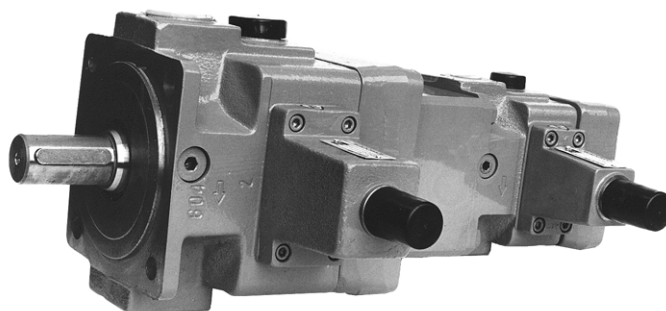
**WK
470 020**

04.1999r.

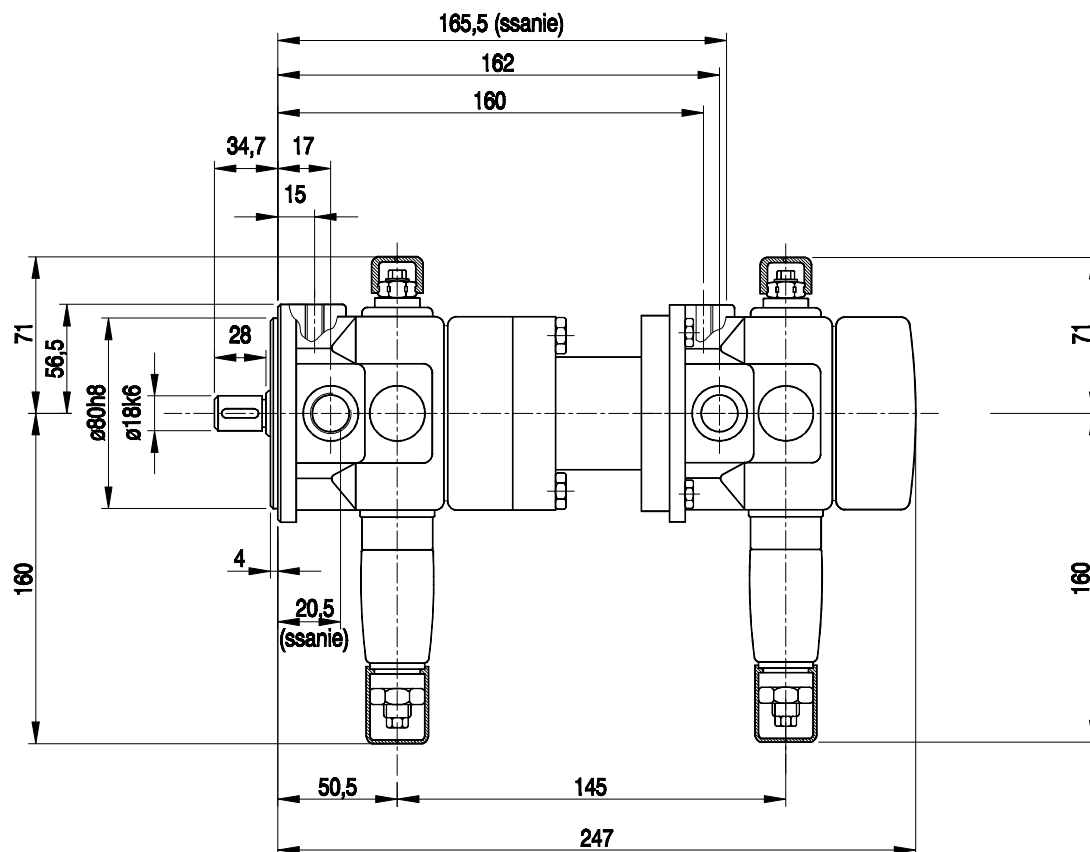
The pump combination V3 + V3 is composed of two variable displacement vane pumps.

The front pump is flange or subplate mounted. Both pumps are driven from one common shaft. Their delivery flow varies from $Q = 0$ to Q_{\max} as required by the user. Variable flow displacement is gained by means of the pressure compensator. Because of this, loss of power in the circuit is kept to a minimum.

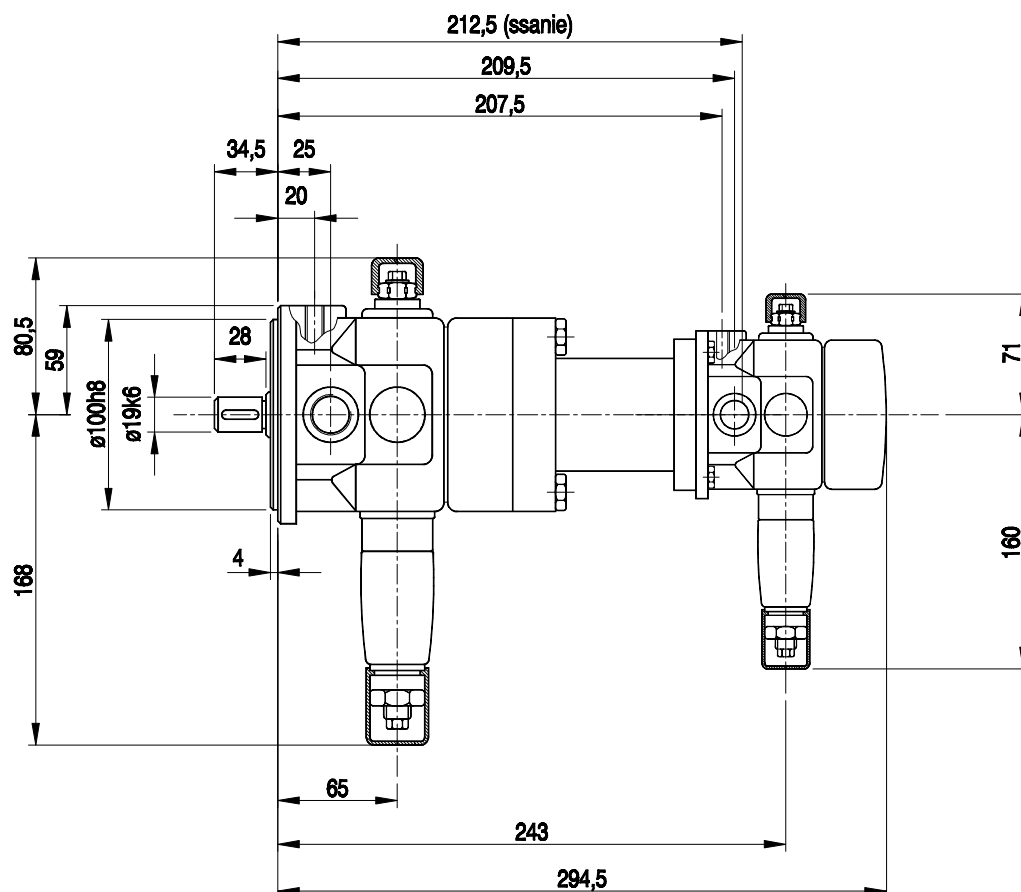
For further details on the individual pumps see the data cards of pumps V3.



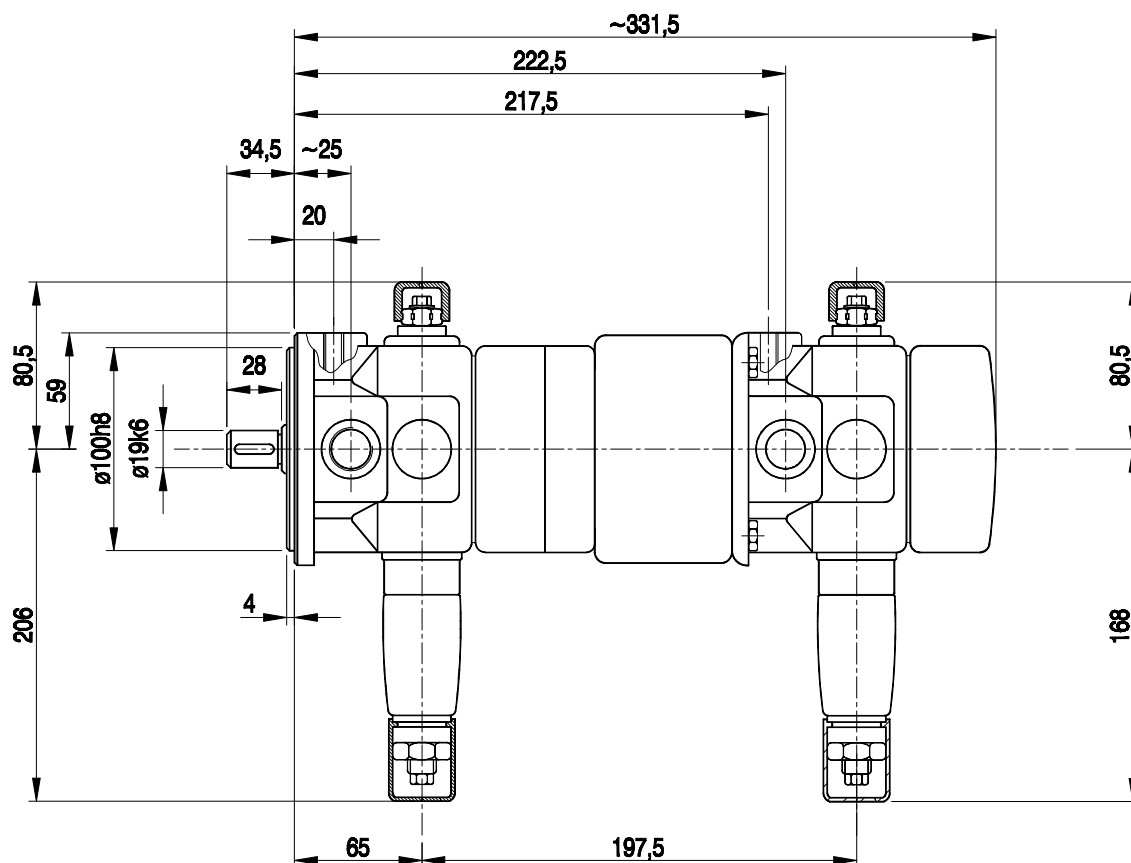
Overall dimensions for pump combination V3/12 + V3/12



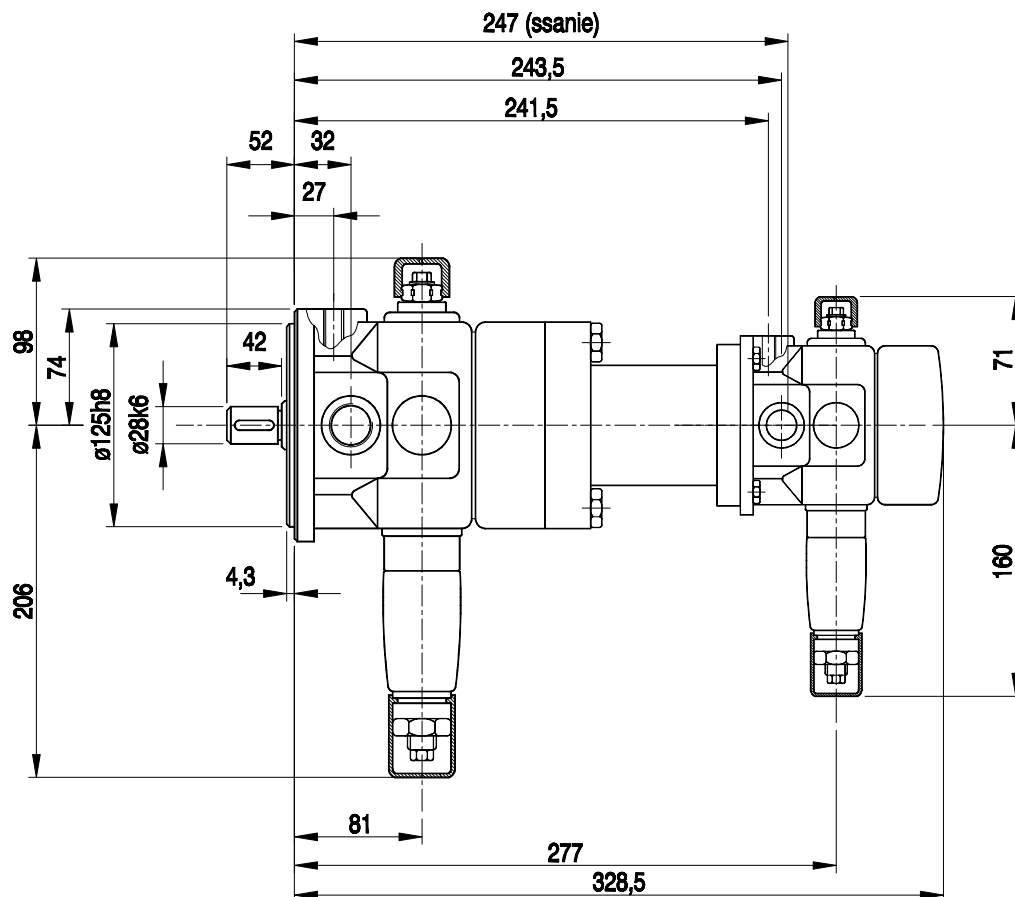
Overall dimensions for pump combination V3/25 + V3/12



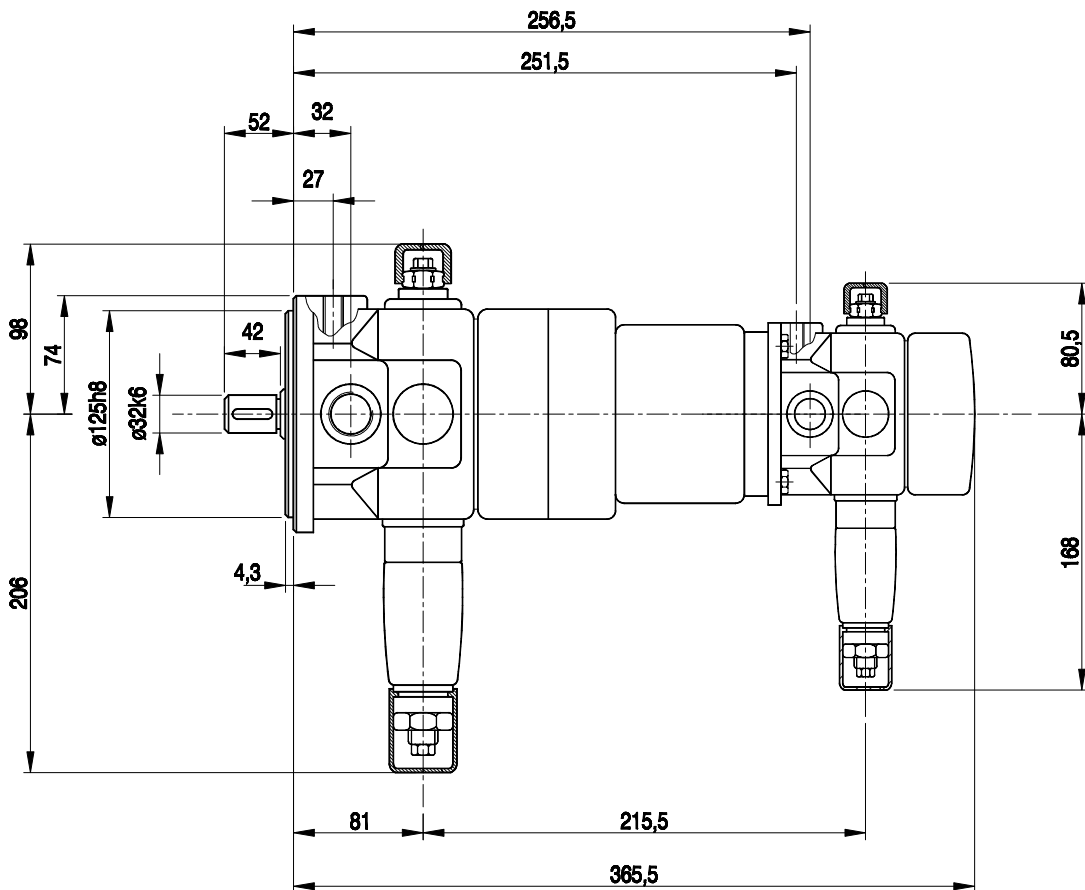
Overall dimensions for pump combination V3/25 + V3/25



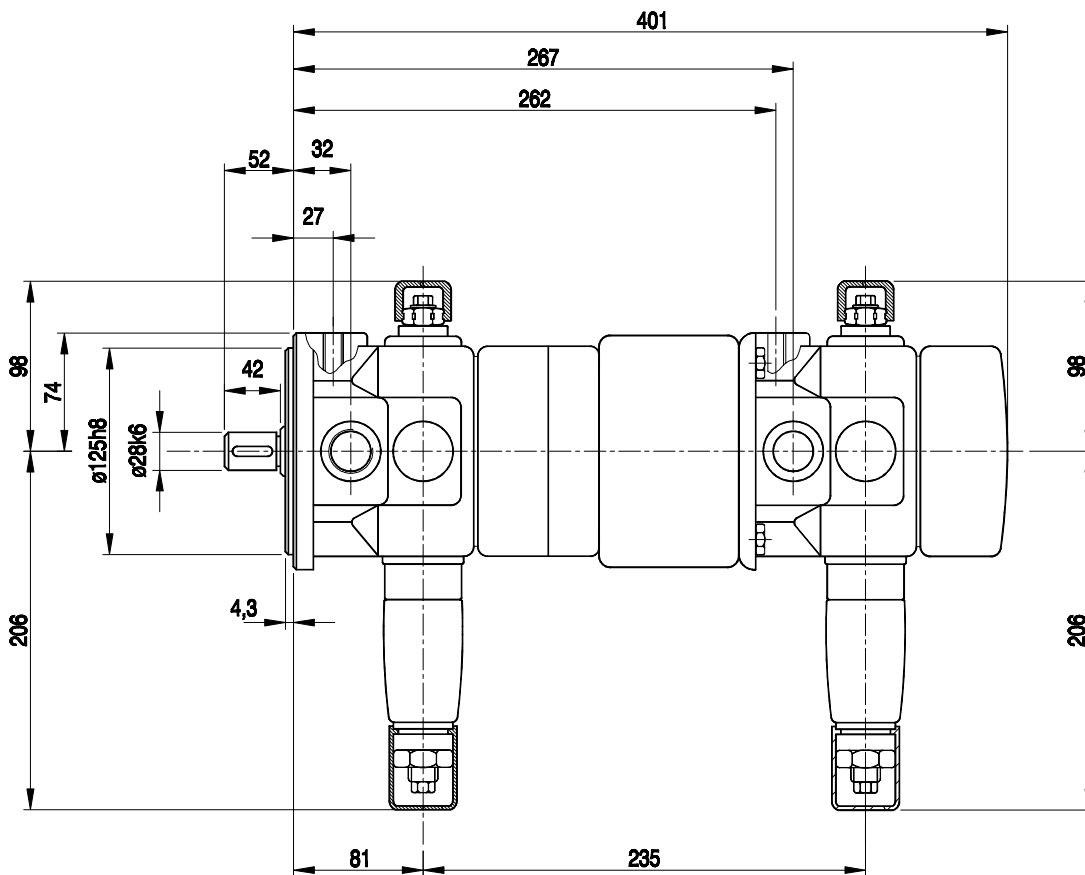
Overall dimensions for pump combination V3/40 + V3/12



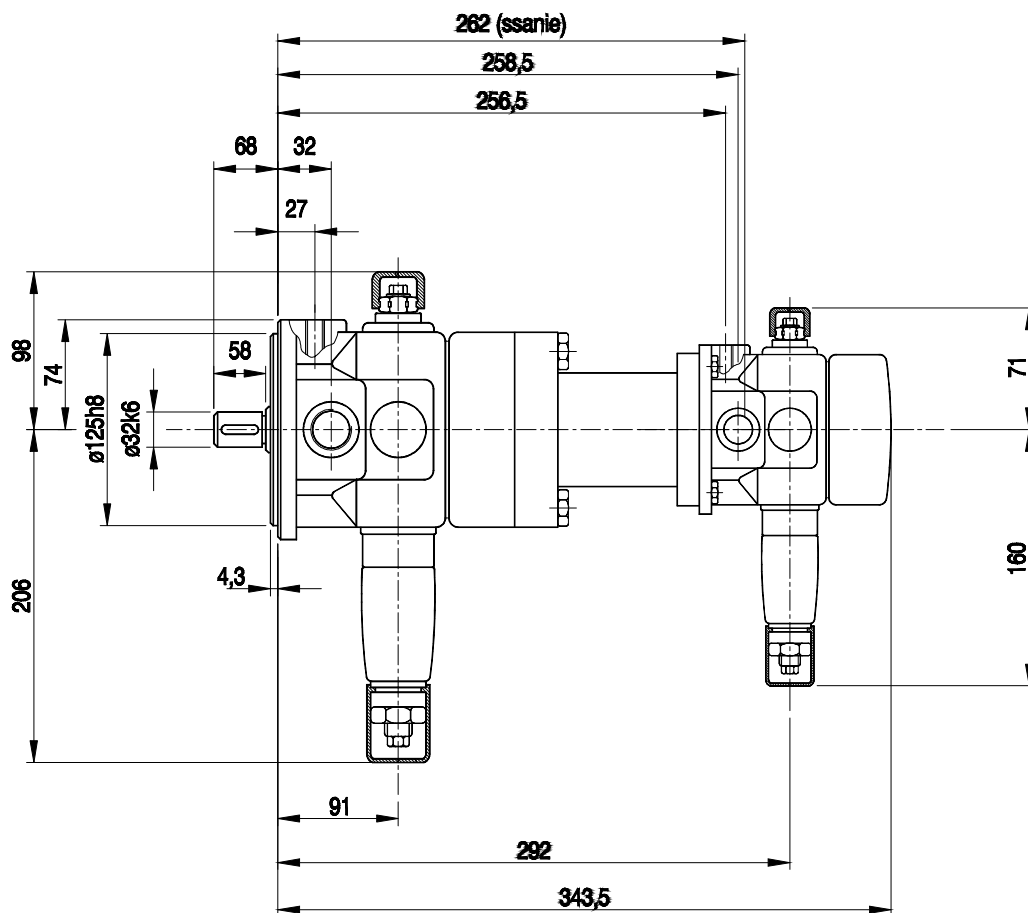
Overall dimensions for pump combination V3/40 + V3/25



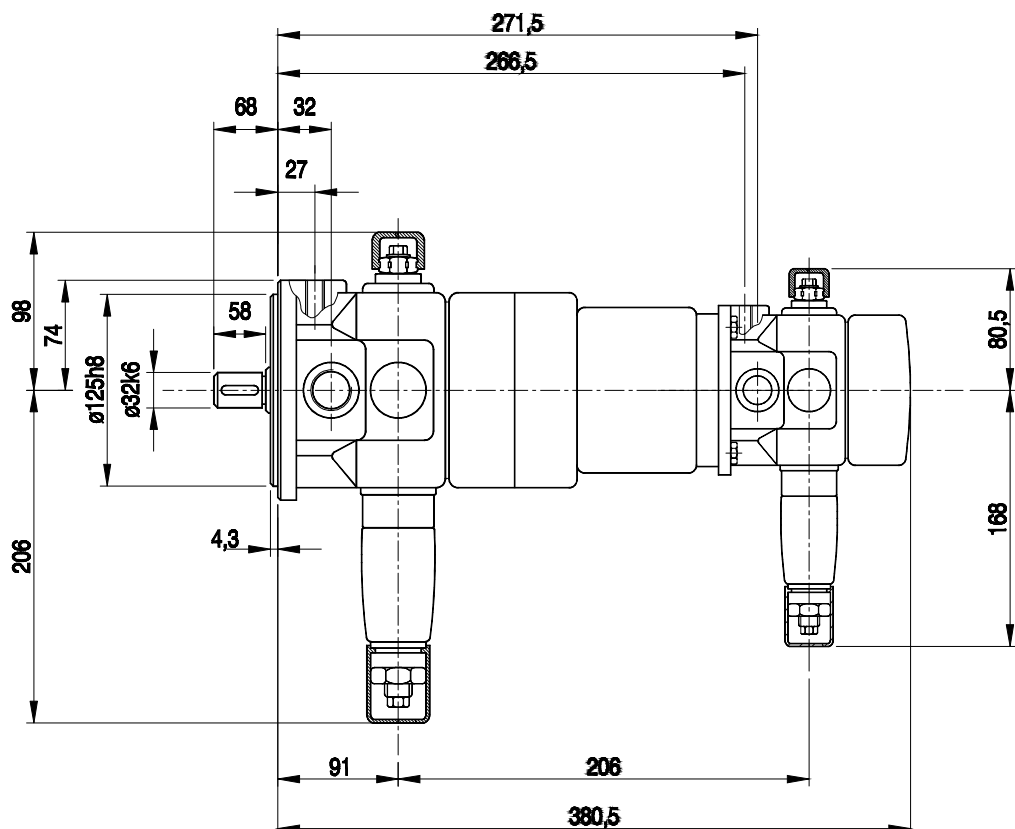
Overall dimensions for pump combination V3/40 + V3/40



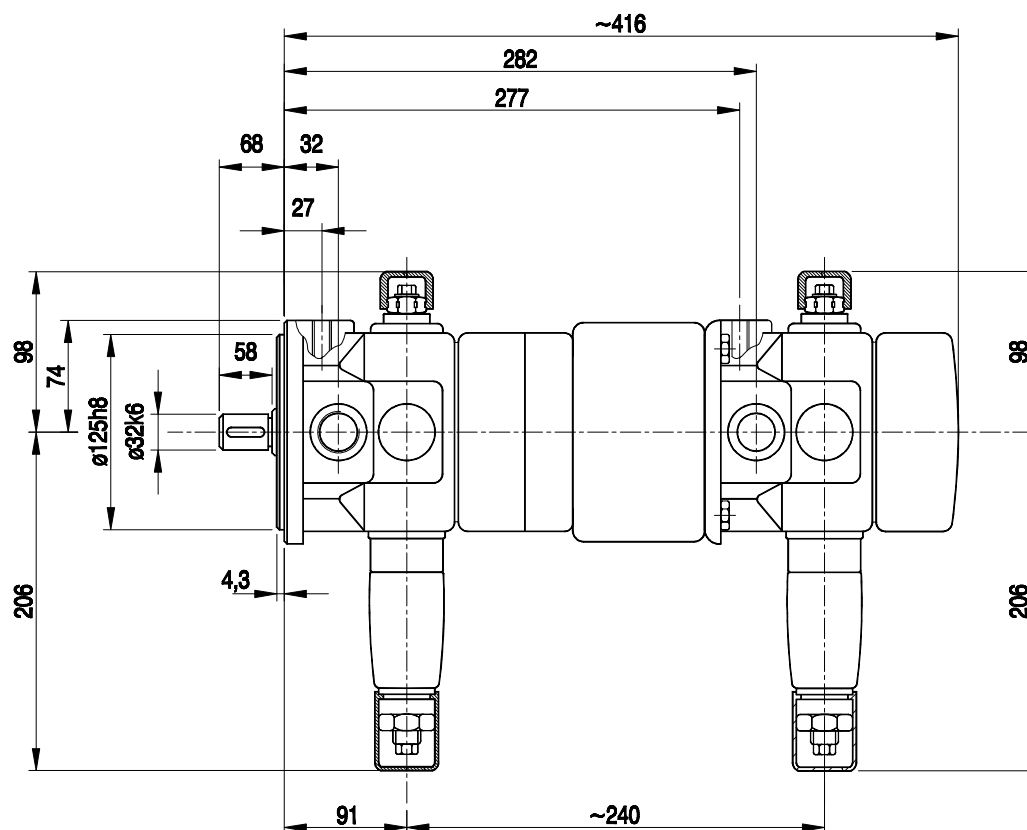
Overall dimensions for pump combination V3/63 + V3/12



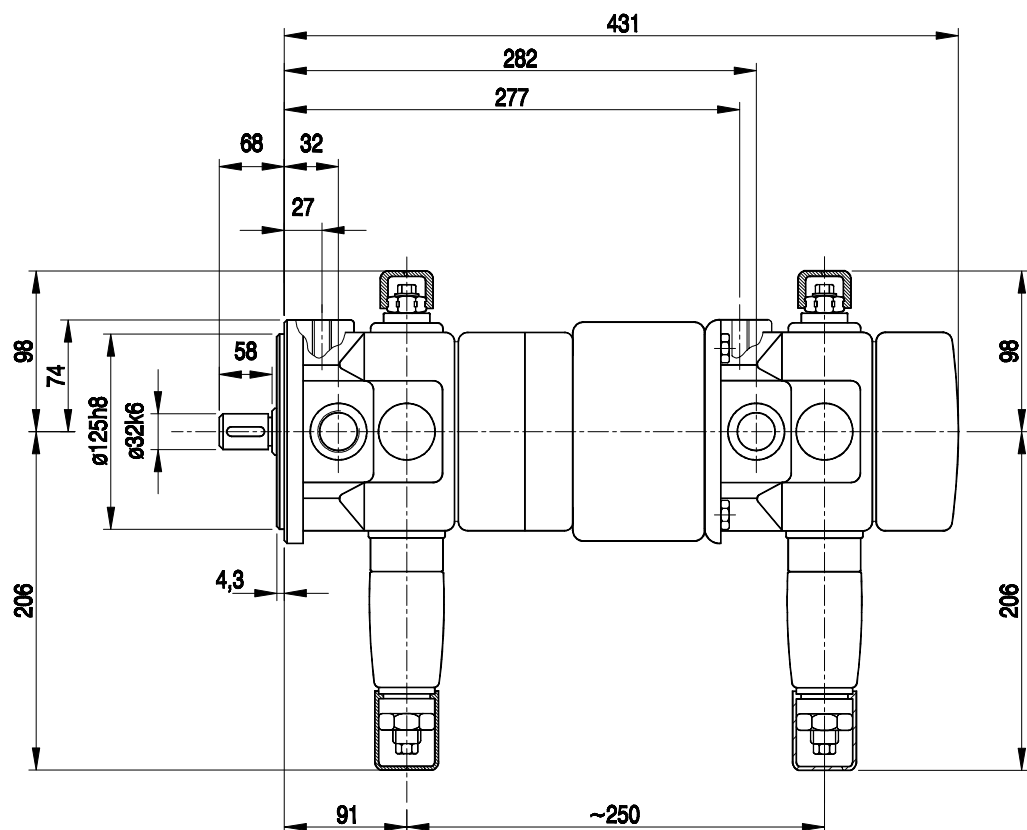
Overall dimensions for pump combination V3/63 + V3/25



Overall dimensions for pump combination V3/63 + V3/40



Overall dimensions for pump combination V3/63 + V3/63



HOW TO ORDER

Orders for pumps coded as below should be placed at the manufacturer.

Front pump

1 PV		V3	/	R	E						1
-------------	--	-----------	----------	----------	----------	--	--	--	--	--	----------

+ Rear pump

1 PV	2	V3	/	R	G	1					1
-------------	----------	-----------	----------	----------	----------	----------	--	--	--	--	----------

Mounting :

Flange = 2

Subplate = 6

Series number :

for V3/12 i 25 (30 - 39)

for V3/40 i 63 (20 - 29)

Connection and instalation

dimensions remain

unchanged

Pump combination :

WN12 + WN12

WN40 + WN40

WN25 + WN12

WN63 + WN12

WN25 + WN25

WN63 + WN25

WN40 + WN12

WN63 + WN40

WN40 + WN25

WN63 + WN63

Connection :

Threads

= 1

Subplate

= 8

Sealing :

For mineral oils

= M

For phosphate ester

= V

Pressure setting :

Pressure controller - hexagonal head screw

= C

Pressure controller - square head screw

= H

Lockable pressure controller

= S

Zero stroke pressure range :

Zero stroke pressure range 10,0 MPa

= 100

Zero stroke pressure range 6,3 MPa

= 63

Zero stroke pressure range 4,0 MPa

= 40

Zero stroke pressure range 2,5 MPa

= 25

Flow setting :

Adjustment screw - hexagonal head screw

= A

Adjustment screw - square head screw

= H

Lockable adjustment screw

= S

Air bleed valve

The coding of pump combination comprises two individual designations joined by a sign "+". Letter "E" is added to the designation of a front pump and letter "G" to the designation of a rear pump.

CODING EXAMBLE

1 PV2V3-30/25RE1MC100A1 + 1 PV2V3-30/12RG1MC63A1

For further details on single pumps see corresponding data cards:

PV3/12- WK 414/ 501

PV3/25 - WK 409/073

PV3/40 - WK 144/618

PV3/63 - WK144/619



Q-HYDRAULIKA, Rakovník
Rabasova 2281, 269 01 Rakovník, tel./fax: 313 514 718
e-mail: info@q-hydraulika.cz, www.q-hydraulika.cz